

Products /  **CASTALDI** / TELLUX D44 / D44 TELLUX/T3 / D44K/T3-21VLWN-EB

TELLUX D44 D44K/T3-21VLWN-EB

TECHNICAL DATA

GENERAL



| | |
|--------------------|--|
| Item code | D44K/T3-21VLWN-EB |
| Place installation | outdoor |
| Name | D44 TELLUX/T3 / D44K/T3-21VLWN-EB ground recessed |
| Note | Patented orbital aiming system VOLVENDO. 5000K on request. DALI version on request. |
| Standard colour | stainless steel frame sandblasted |
| Environments | façades and architectural works, wellness, hallway, conference hall, places of worship |



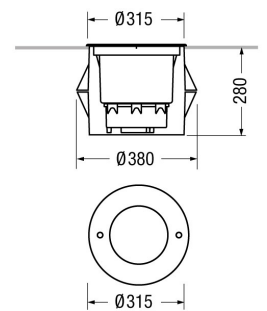
PHYSICAL

| | |
|-------------------|---|
| Installation type | ground recessed |
| Mounting type | with rough-in housing |
| Painting | Polyester powder coating, with a pluri-processed against corrosion (passed the exposure of over 1500 hours in a saline mist environment). |
| Screws | AISI 304 stainless steel screws. |
| Seals | Silicone Rubber. |
| Static load | 5000Kg |
| Body | Corrosion resistant die-cast aluminium body. High impact resistant composite technopolymer housing box. AISI 316 stainless steel frame sandblasted. |



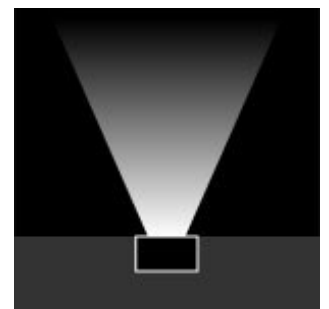
DIMENSIONS

| | |
|-------------------------------|-------|
| D: Total diameter device (mm) | 315 |
| Built-in shaped | Round |
| Diameter built-in (mm) | 380 |
| Built-in depth (mm) | 280 |
| Weight (kg) | 9 |
| Volume piece packed (m3) | 0,046 |



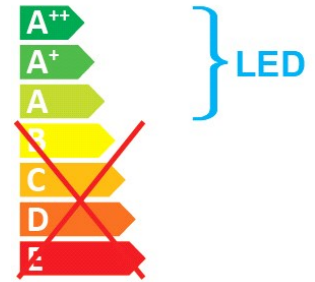
OPTICAL SYSTEMS

| | |
|----------------|--|
| Opening beam | elliptical |
| Adjustable | Yes |
| Tilt | ±15° VOLVENDO |
| Optical System | Tempered safety glass - 12 mm thickness, mechanical and thermal shock resistant. |



ENERGY SAVING

This luminaire contains built-in LED lamps
The lamps cannot be changed in the luminaire



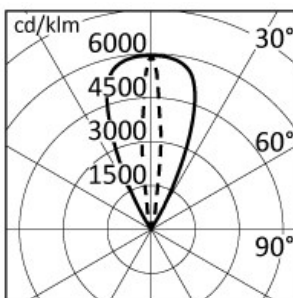
SOURCES

| Source Type | Source Power | System Power | Source | Lamp Socket | Sources Temperature Colour | Nominal Flux | Output Flux | Source description |
|-------------|--------------|--------------|--------|-------------|----------------------------|--------------|-------------|--------------------|
| LED | - | 36,6W | - | - | 4000K | - | 2649 lm | - |

ELECTRICAL

| | |
|-----------------------|--|
| Ballast type | Electronic |
| Mounting ballast type | Integral |
| Line input | Pre-wired and tested with resin sealed watertight H07RN-F cable (for a fast and secure connection to the main power line, use ACS/CR1 connector or similar). |
| Voltage | 220-240V |
| Frequency | 50-60Hz |

PHOTOMETRICS



| h (m) | Ø (m) | — T=0.0 α=48° | Ø (m) | --- T=0.0 β=13° | Emed(lx) |
|-------|-------|---------------|-------|-----------------|----------|
| 10.00 | 8.83 | | 2.22 | | 85 |
| 8.00 | 7.06 | | 1.78 | | 132 |
| 6.00 | 5.30 | | 1.33 | | 235 |
| 4.00 | 3.53 | | 0.89 | | 530 |
| 2.00 | 1.77 | | 0.44 | | 2119 |

NORMS / DIRECTIVES

| | |
|------------|---------------------------|
| Norms | EN 60598-1, EN 60598-2-13 |
| Directives | 2014/35/UE, 2014/30/UE |

ACCESSORIES

INCLUDED ACCESSORIES

Rough-in housing

Ground rough-in housing box, high impact resistant composite technopolymer (Code PM/D44-013).



OPTIONAL ACCESSORIES

Electrical

Accessory code ACS/CR1

Technical description
Fast IP68 connector 1bar (10m-1h) for cable Ø7-12mm - 3x1.5mm.



Accessory code ACS/CR6

Technical description
4 ways IP68 wiring box for cable Ø5-14mm - 3x1,5mm.

